

2024

NATIONAL FIREWISE USA® PROGRAM
CERTIFICATE
OF RECOGNITION

The National Fire Protection Association acknowledges that

Big Bar & Big Flat

located in Junction City, CA

has successfully completed the Firewise USA® program's annual requirements for 2024
and is a participating site in good standing throughout the 2025 calendar year.



James T. Pauley, President, NFPA

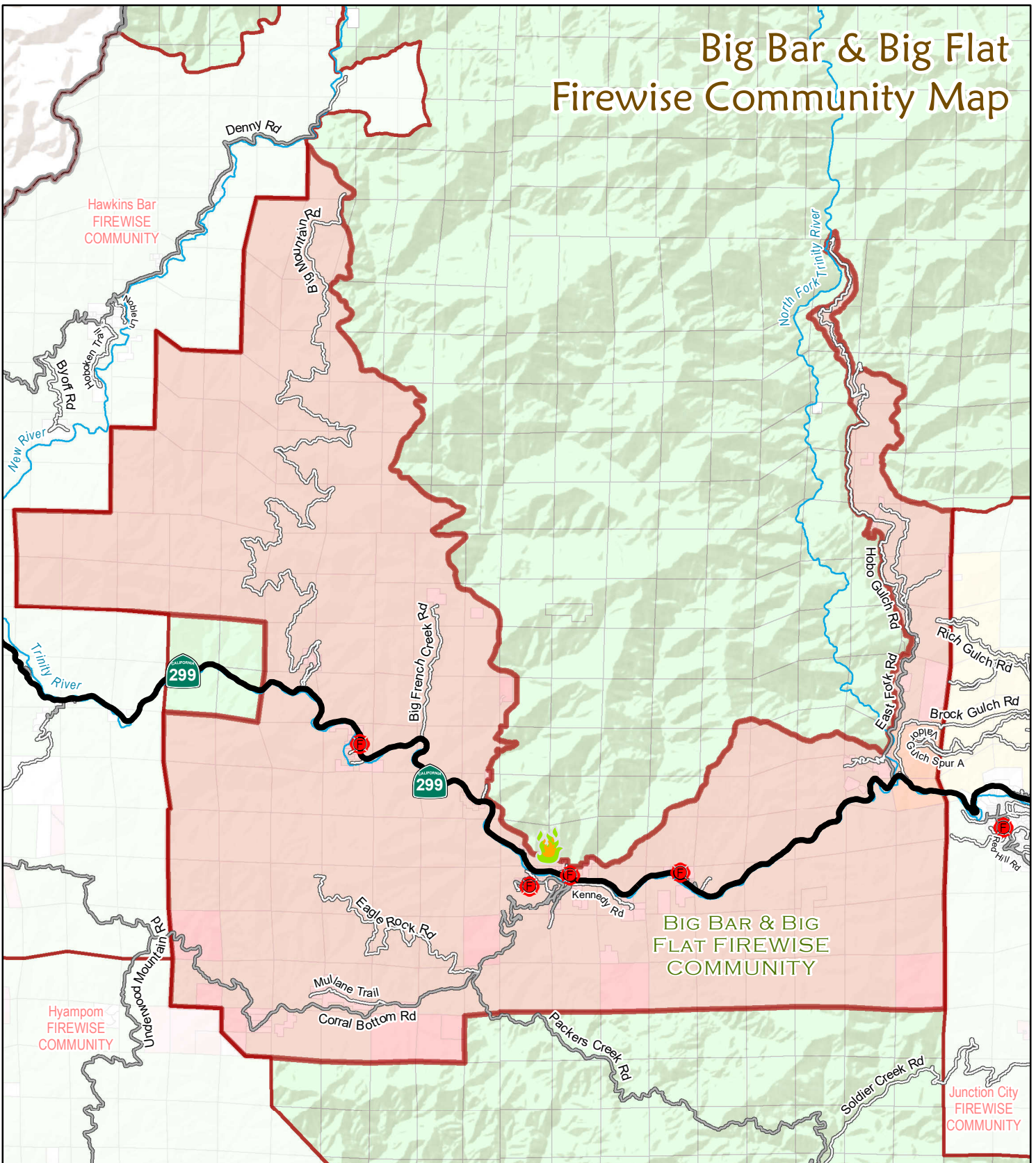


FIREWISE USA®
RESIDENTS REDUCING WILDFIRE RISKS

December 17, 2024

Date Issued

Big Bar & Big Flat Firewise Community Map



Firewise Communities	County Boundary	Highways	Private - Timber (TPZ)
Fire Station	Roads	Ownership	Bureau of Land Mgmt.
Big Bar & Big Flat Firewise Community Boundary	Paved	Private / Other	U.S. Forest Service
	Rocked & Native		

0 2.5 5 Kilometers
0 2.5 5 Miles

7/27/2023

Vicinity & Location Map

Prepared By

Trinity County Resource Conservation District

FIREWISE COMMUNITIES

Trinity County FireSafe

1:170,000